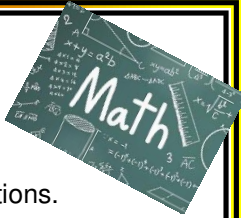


Term 4 Overview -2023

Mr. Mallee Ms Durdin - Room 21

Mathematics



Number

- Continue making connections with tenths/hundredths to decimal notations.
- Worded number problems.
- Finding unknown quantities in number sentences
- Revision of place value and partitioning large numbers.
- Continue multiplication and division with remainders.

Measurement / Geometry

- Time including 24 hour time, determining arrival and departure time, solving simple time problems. Measurement revision.

Statistics and Probability.

- Interpreting data and creating data graphs in excel.

Willow Creek Adventure Camp



- Team building
- Developing independence

The Arts- Media

Visual

- Christmas crafts.

Performing

- End of year concert.



Design Technologies

Digital Technologies-

- Using excel to create data graphs

Thinking Routines



Thinking routines are used to help clarify understanding, explore prior knowledge and establish deeper thinking.

See Think Wonder, Looking X10, Zoom In, Chalk Talk.

English

- **Word Study**-suffixes and prefixes, adjective order, revision.
- **Oral Language**- class presentations, concert item, animal report.
- **Reading**-exploring book choice, reading an unfamiliar text to challenge what students read.
- Review a book, drawing on own experiences and comparing to other texts.
- Reading aloud with expression to an audience.
- Revising comprehension strategies.
- **Writing**- information and persuasive texts –What elements indicate a higher level text.
- Developing hand writing skills.
- Using software programs to construct, edit and publish written texts-what skills have we learnt?
- Revising an original student text- what do they notice? What would they change?



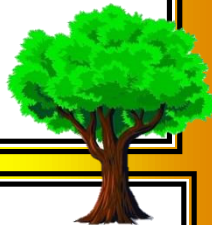
Health

- Keeping Safe: Child Protection Curriculum
- Focus Area 4 – Protective strategies
- Topics: Assertive responses, 'What if...?' problem solving, Network review and persistence

Geography (HASS)

The importance of natural environments.

- Significance of Environments
- Key Inquiry Question: How can people use places and environments more sustainably?
- Students will discover what the North Pacific Gyre is and then conduct their own guided research about it. They are prompted to think about the waste created by humans and how this is managed. They investigate innovative ways that waste is managed in some other places in the world and think about solutions to the world's waste issues.



Science

Teacher: Mr. Nichols- See separate overview

French

Teacher: Ms Yvette -See separate overview.